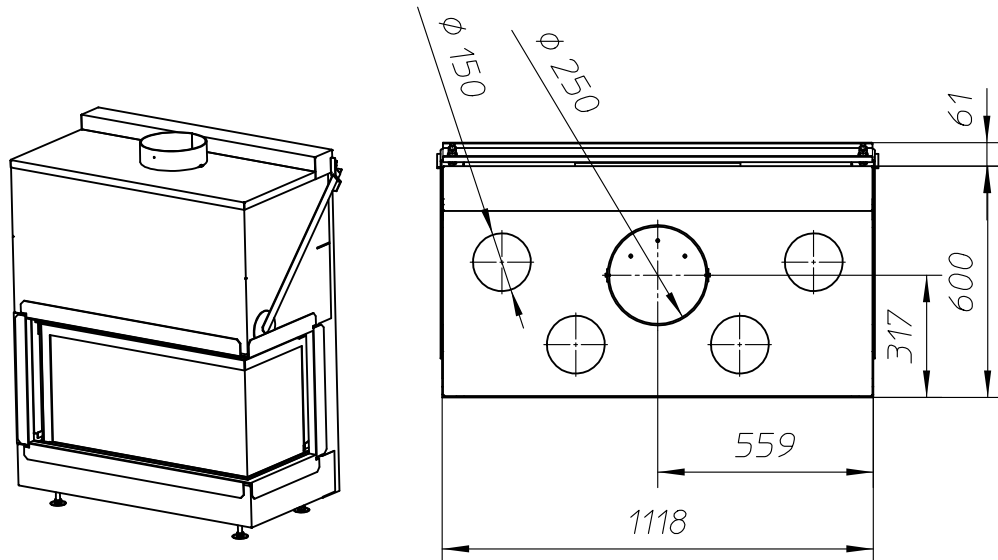
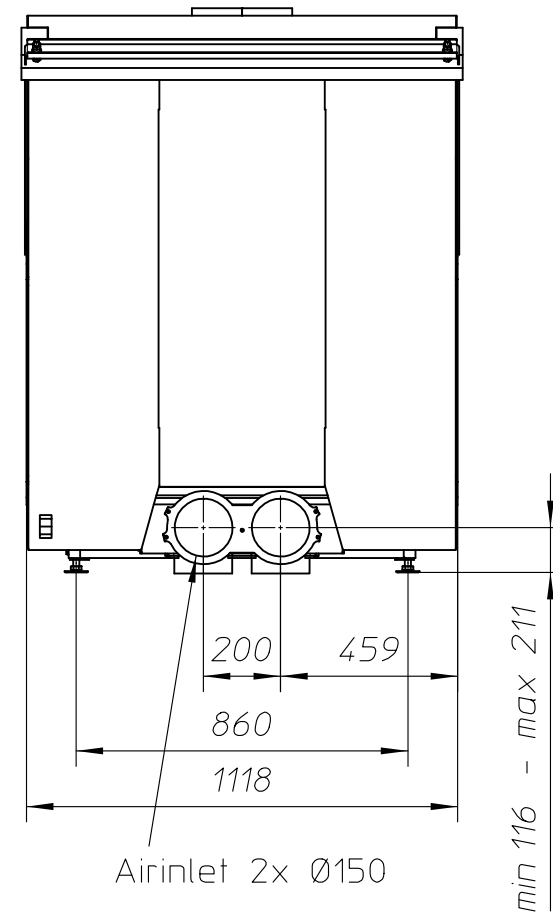
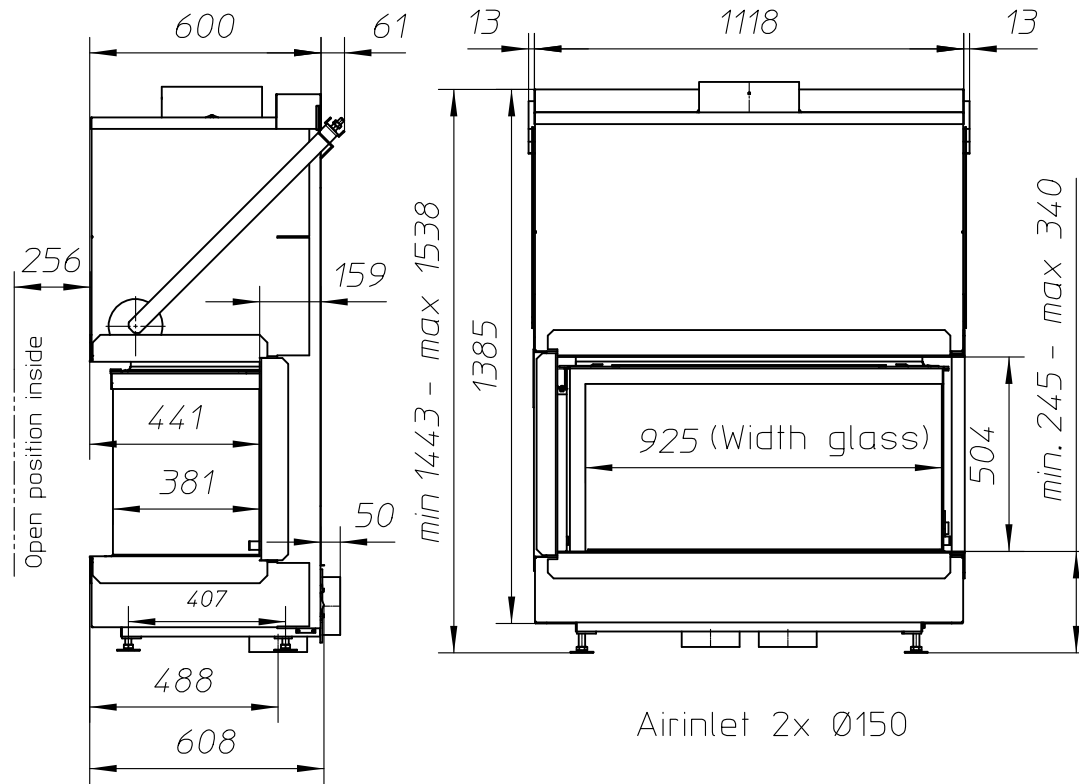


Standard configuration is with 4mm frame



ULTIME D<sub>Patented</sub>

metalfire

## Technical Document

ULTIME D MF 1050-50 WHE 2SR V20

### Dimensions (mm)

- combustion opening WxHxD: 1056x441x504
- external WxDxH: 1118x600x1443
- fresh air: 2xØ150
- diameter flue: Ø250

### Technical Data

- Ecolabel: A+
- capacity: 19kW
- efficiency capacity: 84%
- CO (volume with 13%O<sub>2</sub>): 0.072%
- dust (volume with 13%O<sub>2</sub>): 29,5mg/Nm<sup>3</sup>
- weight: 320kg
- Air intake to convection: minimum 720cm<sup>2</sup>(4xØ150)
- Air exhaust to convection: minimum 720cm<sup>2</sup>(4xØ150)

### Specifications

- inside finishing: heat-resistant black paint
- vermiculite insulation plates
- convection jacket in galvanized steel
- back and sides: ribbed cast iron
- interior finishing: ORIGINAL (ribbed cast iron)

### Options

- Finishing frame

### Table: prescribed insulation thickness (mm)

Combustable finishing material				
	A	B	C	D
Test report (TC = 0,14 W/mK)	25	25	25	25
Non-combustable finishing material				
non-combustable materials (structural building items EXCLUDED e.g. load bearing walls)	0	0	0	0
TC = thermal conductivity NC = non-combustable				

### First aid and technical support:

- support@metalfire.eu
- +32 (0)9 261 50 57

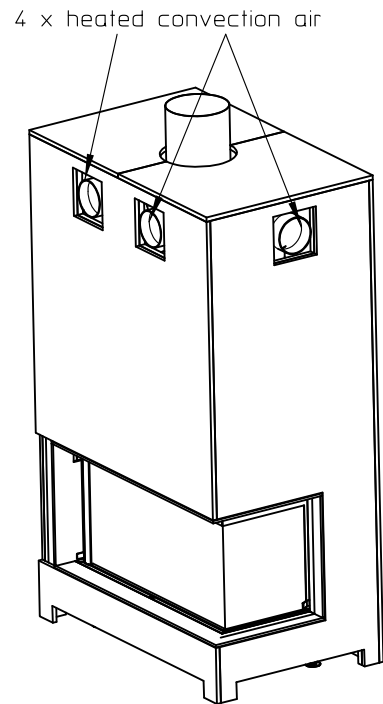
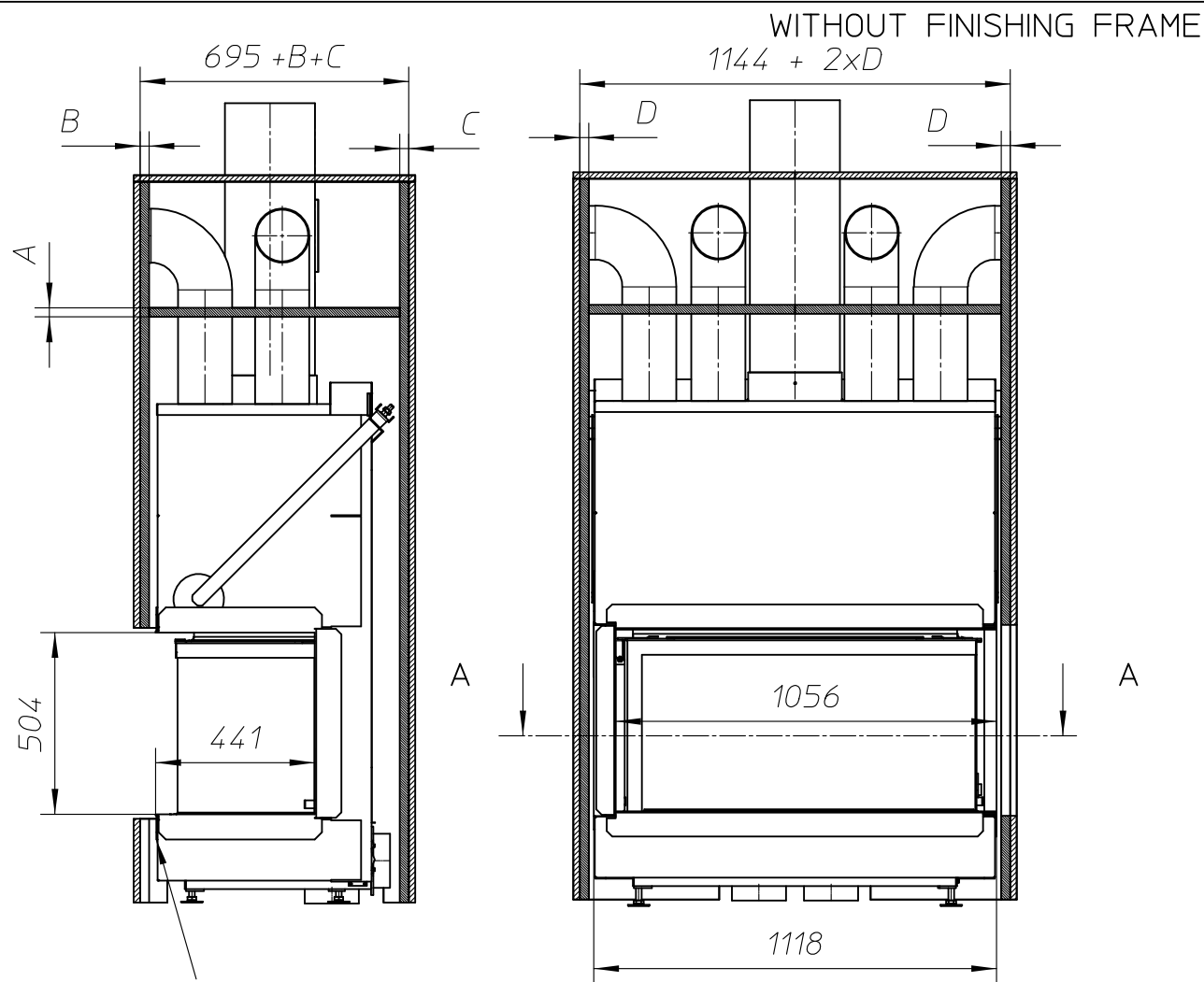
scale 1:20

www.metalfire.eu EN 13229

General dimensional tolerances up to 6mm  
Metalfire preserves the right to modify specifications without previous notice

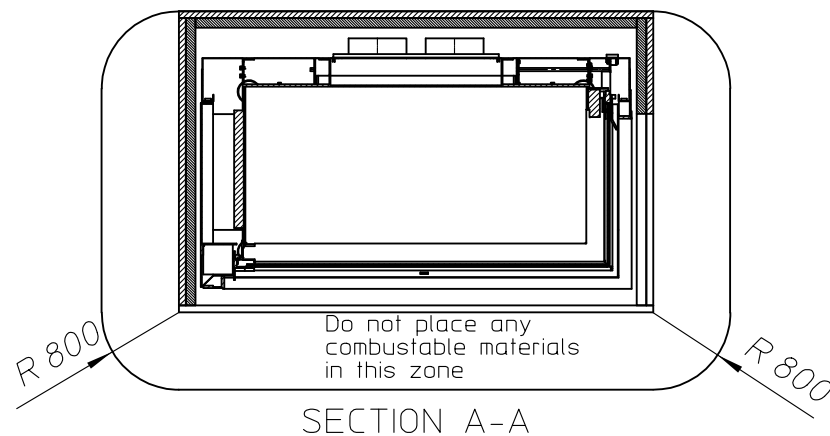
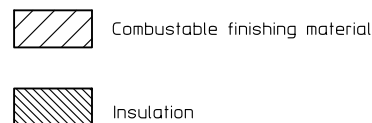
Rev.  
A

CE  
Sheet  
1/5



Scale 1:30

noitoluani bnd 930lq9iit n99wt9d mmEŦ .niM



ULTIME D Patented

metalfire

## Technical Document

ULTIME D MF 1050-50 WHE 2SR V20

### Dimensions (mm)

- combustion opening WxHxD: 1056x441x504
- external WxDxH: 1118x600x1443
- fresh air: 2xØ150
- diameter flue: Ø250

### Technical Data

- Ecolabel: A+
- capacity: 19kW
- efficiency capacity: 84%
- CO (volume with 13%O<sub>2</sub>): 0.072%
- dust (volume with 13%O<sub>2</sub>): 29,5mg/Nm<sup>3</sup>
- weight: 320kg
- Air intake to convection: minimum 720cm<sup>2</sup> (4xØ150)
- Air exhaust to convection: minimum 720cm<sup>2</sup> (4xØ150)

### Specifications

- inside finishing: heat-resistant black paint
- vermiculite insulation plates
- convection jacket in galvanized steel
- back and sides: ribbed cast iron
- interior finishing: ORIGINAL (ribbed cast iron)

### Options

- Finishing frame

Table: prescribed insulation thickness (mm)

Combustable finishing material				
	A	B	C	D
Test report (TC = 0,14 W/mK)	25	25	25	25
Non-combustable finishing material				
non-combustable materials (structural building items EXCLUDED e.g. load bearing walls)	0	0	0	0
TC = thermal conductivity NC = non-combustible				

### First aid and technical support:

- support@metalfire.eu
- +32 (0)9 261 50 57

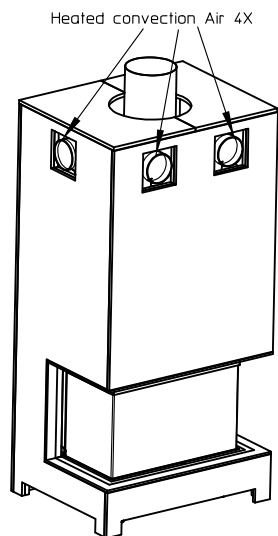
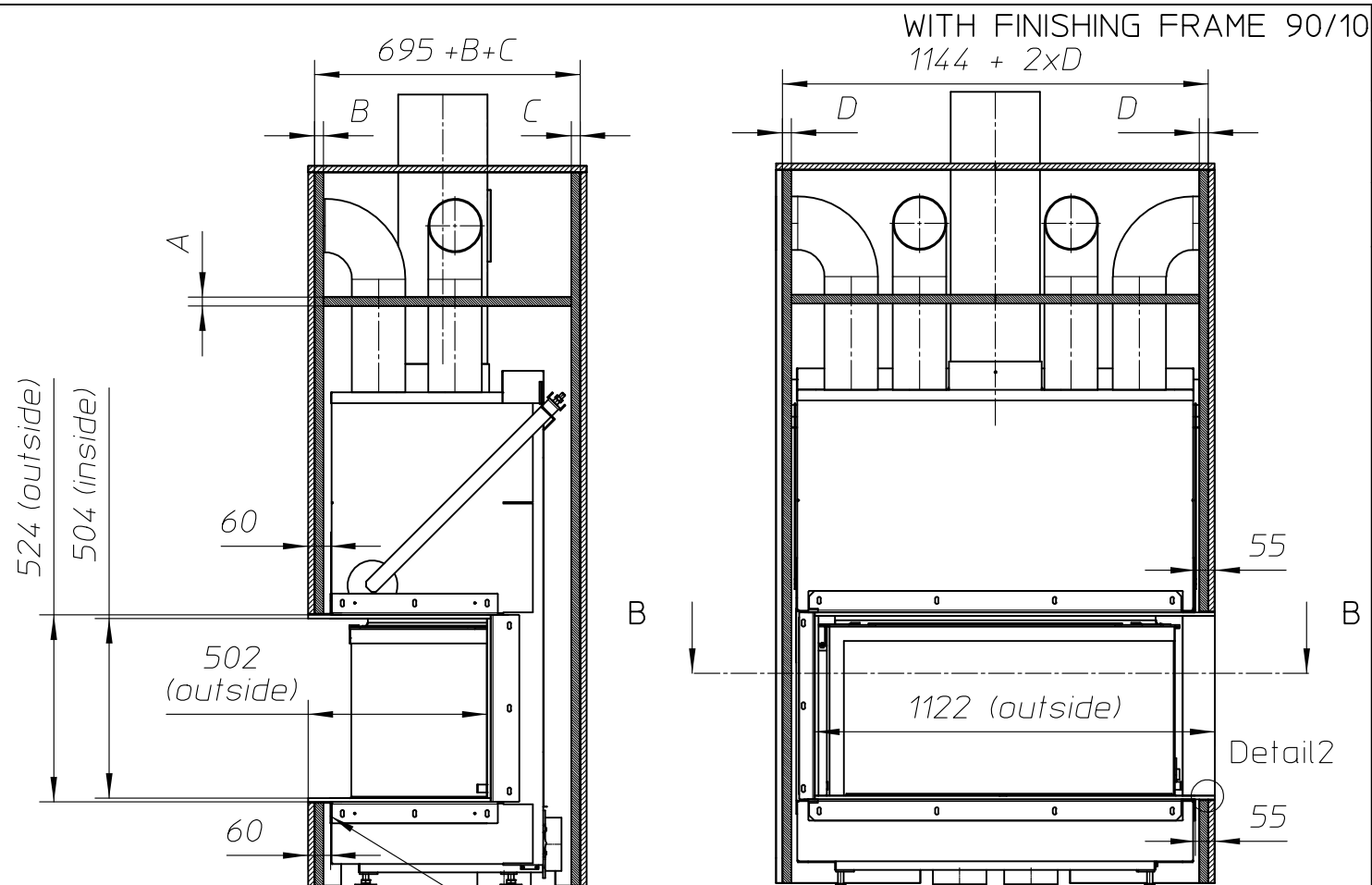
scale 1:20

www.metalfire.eu EN 13229

General dimensional tolerances up to 6mm  
Metalfire preserves the right to modify specifications without previous notice

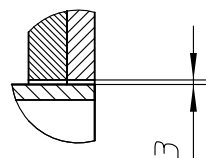
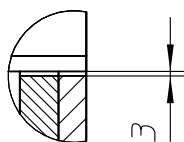
Rev.  
A

CE  
Sheet  
2/5



Heated convection Air 4X

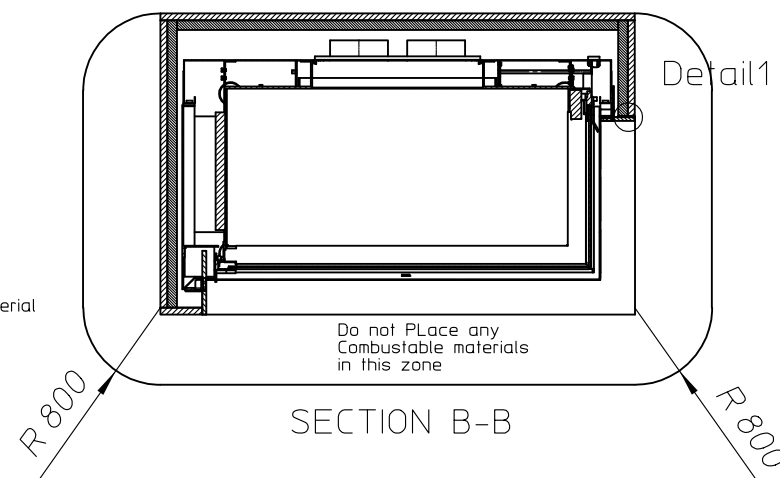
Min. 13mm between fireplace and insulation



Combustible finishing material



Insulation



ULTIME D Patented

metalfire

## Technical Document

ULTIME D MF 1050-50 WHE 2SR V20

### Dimensions (mm)

- combustion opening WxHxD: 1056x441x504
- external WxDxH: 1118x600x1443
- fresh air: 2xØ150
- diameter flue: Ø250

### Technical Data

- Ecolabel: A+
- capacity: 19kW
- efficiency capacity: 84%
- CO (volume with 13%O<sub>2</sub>): 0.072%
- dust (volume with 13%O<sub>2</sub>): 29,5mg/Nm<sup>3</sup>
- weight: 320kg
- Air intake to convection: minimum 720cm<sup>2</sup> (4xØ150)
- Air exhaust to convection: minimum 720cm<sup>2</sup> (4xØ150)

### Specifications

- inside finishing: heat-resistant black paint
- vermiculite insulation plates
- convection jacket in galvanized steel
- back and sides: ribbed cast iron
- interior finishing: ORIGINAL (ribbed cast iron)

### Options

- Finishing frame

### Table: prescribed insulation thickness (mm)

Combustable finishing material				
	A	B	C	D
Test report (TC = 0,14 W/mK)	25	25	25	25
Non-combustable finishing material				
non-combustable materials (structural building items EXCLUDED e.g. load bearing walls)	0	0	0	0
TC = thermal conductivity NC = non-combustable				

### First aid and technical support:

- support@metalfire.eu
- +32 (0)9 261 50 57

scale 1:20

Rev.  
A

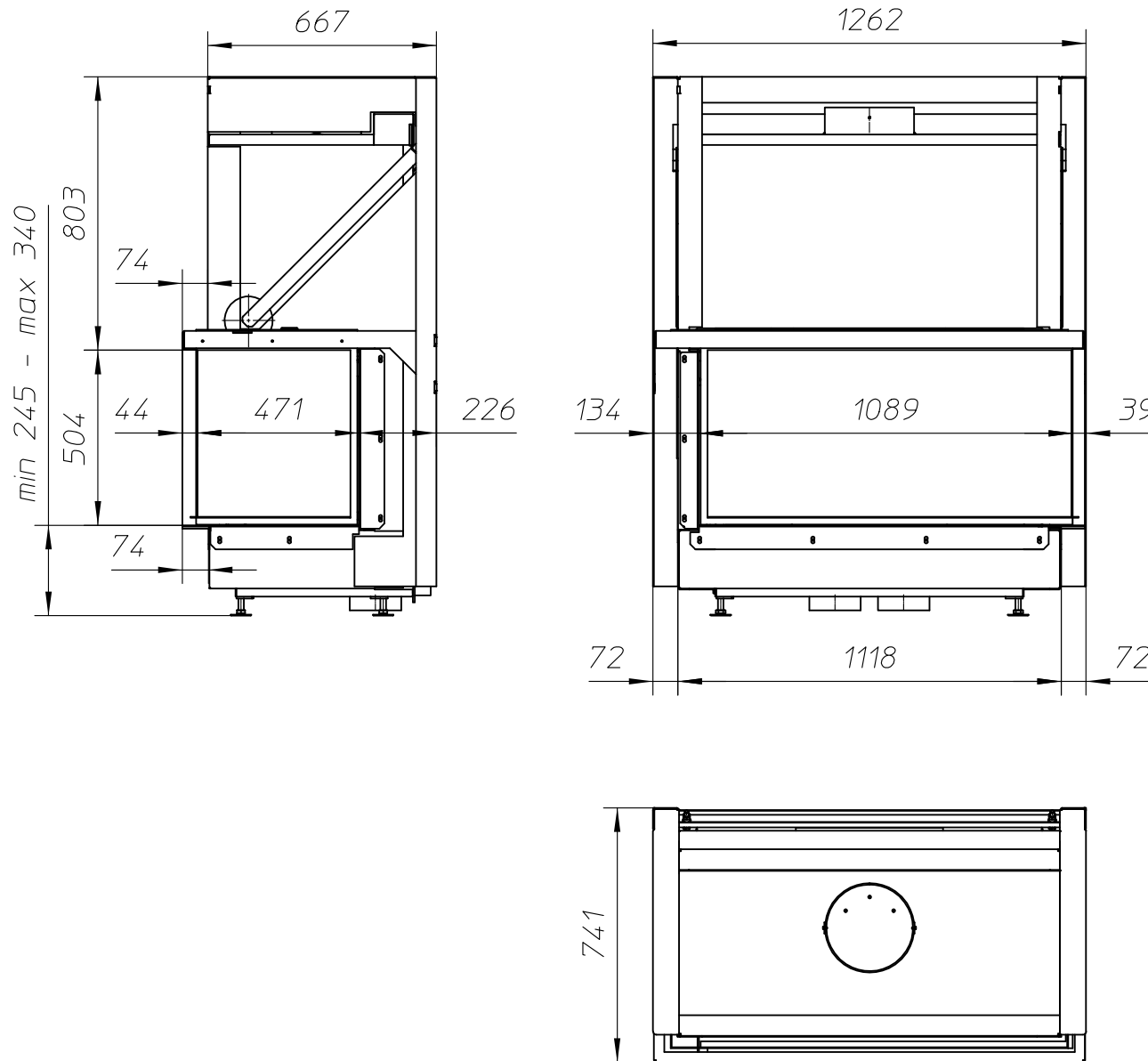
www.metalfire.eu EN 13229

CE

General dimensional tolerances up to 6mm  
Metalfire preserves the right to modify specifications without previous notice

Sheet  
3/5

WITH FIRESCREEN - NO FINISHING FRAME



ULTIME D<sub>Patented</sub>

metalfire

## Technical Document

ULTIME D MF 1050-50 WHE 2SR V20

### Dimensions (mm)

- combustion opening WxH: 1056x441x504
- external WxDxH: 1262x741x1443
- fresh air: 2xØ150
- diameter flue: Ø250

### Technical Data

- capacity: 19kW
- efficiency capacity: 84%
- CO (volume with 13%O<sub>2</sub>): 0.072%
- dust (volume with 13%O<sub>2</sub>): 29.5mg/Nm<sup>3</sup>
- weight: 470kg
- Air intake to convection: minimum 720cm<sup>2</sup> (4xØ150)
- Air exhaust to convection: minimum 720cm<sup>2</sup> (4xØ150)

### Specifications

- inside finishing: heat-resistant black paint
- vermiculite insulation plates
- convection jacket in galvanized steel

First aid and technical support:

- support@metalfire.eu
- +32 (0)9 261 50 57

scale 1:20

Rev.  
A

www.metalfire.eu EN 13229

CE

General dimensional tolerances up to 6mm  
Metalfire preserves the right to modify specifications without previous notice

Sheet  
4/5

WITH FIRESCREEN AND FINISHING FRAME 160/10

ULTIME D<sub>Patented</sub>

metalfire

## Technical Document

ULTIME D MF 1050-50 WHE 2SR V20

### Dimensions (mm)

- combustion opening WxH: 1056x441x504
- external WxDxH: 1316x798x1443
- fresh air: 2xØ150
- diameter flue: Ø250

### Technical Data

- capacity: 19kW
- efficiency capacity: 84%
- CO (volume with 13%O<sub>2</sub>): 0.072%
- dust (volume with 13%O<sub>2</sub>): 29.5mg/Nm<sup>3</sup>
- weight: 320kg
- Air intake to convection: minimum 720cm<sup>2</sup> (4xØ150)
- Air exhaust to convection: minimum 720cm<sup>2</sup> (4xØ150)

### Specifications

- inside finishing: heat-resistant black paint
- vermiculite insulation plates
- convection jacket in galvanized steel

First aid and technical support:

- support@metalfire.eu
- +32 (0)9 261 50 57

scale 1:20

www.metalfire.eu EN 13229

General dimensional tolerances up to 6mm  
Metalfire preserves the right to modify specifications without previous notice

Rev.  
A

CE

Sheet  
5/5

